

# Home Greenhouse Controller

---

## Low Cost Greenhouse Automation

**Tom Schmidt**

3/17/2015

Tom@tschmidt.com

<http://www.tschmidt.com>

In 2012 I designed a simple system to manage greenhouse ventilation and thermal storage. This paper describes the various features and the tradeoffs involved in implementing them. The brain of the system is a low cost programmable logic controller (PLC) that includes a web server. The system has been extremely successful. This revision documents several features I've added over the years.

## Table of Contents

Greenhouse Basics .....	3
Automation Wish List.....	4
Summer Ventilation .....	5
Thermal Storage – Stone Floor .....	5
Thermal Storage – Water Barrels.....	6
Freeze Protection.....	6
Impending Freeze Warning.....	7
Integration of Greenhouse and Wood Heat Controller .....	7
Humidity Control.....	7
Solar Batch Water Heater .....	8
PTRV .....	8
Cold Water Supply .....	9
Water Freeze Protection.....	9
Lighting.....	9
Switched Receptacles .....	10
Sensors.....	10
Temperature .....	10
Outside Air .....	11
Greenhouse Air .....	11
Water Barrel.....	11
End-to-End Domestic Hot Water .....	11
Humidity.....	11
Door Monitoring .....	12
Web Interface .....	12
Email Alerts .....	13
Daily Status Email.....	13
User Settings Report .....	13
Freeze Warning.....	14
Basements Fan Door Warning .....	14
Temperature Sensor Failure .....	14
System Implementation.....	15

WebControl PLC .....	16
Interface PCB.....	17
Temperature Display.....	17
DC Power.....	17
AC Power.....	18
Sensor Cabling.....	18
To-do List.....	19
Conclusions .....	19
Appendix A Schematics.....	20
Chassis Wiring .....	20
Front Panel Wiring .....	21
PLC Wiring .....	22
Interface – Logic.....	23
Interface – Switch Conditioning.....	24
Sensor Wiring.....	25
Appendix B PLC Configuration .....	26
Network Setup .....	26
I/O Setup .....	27
Temperature Setup.....	27
Email Setup .....	28
Appendix C PLC code.....	29

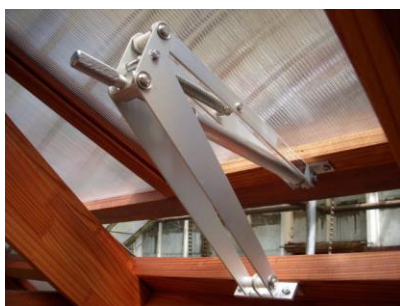
## Greenhouse Basics

We have an 8 x 16 foot lean-to greenhouse attached to the south facing wall of the house. The lean-to design reduced cost and minimizes heat loss through the rear greenhouse wall. The greenhouse floor is at basement floor walk out level with a concrete frost wall extending 4 feet below and rising about 4 feet above the floor. The concrete wall is insulated with 2" of foam board and much of it is below ground level minimizing heat loss.



Greenhouse structure is 2x6 and 2x4 pressure treated lumber with a channel routed to accept 8mm dual wall [polycarbonate](#) panels. The inspiration for this construction technique came from a [New Yankee Workshop](#) episode where they built a small standalone greenhouse. I struggled with the problem of using fixed size glazing panels. Because this is a lean-to design roof height is determined by the bottom of the first floor windows. Standard sized panels did not fit in the available space. The

polycarbonate panels are ideal as they can be easily cut to size. Routing channels in the framing lumber eliminated the cost of aluminum extrusions normally used to mount the panels. Since the panels are retained in routed channels the structure is not completely watertight so there are a few drips during heavy rain/snow. This would be a problem if we were using it as a sun room but not as a greenhouse. The leaks did however affect how the electrical system was installed.



Ventilation is provided by three windows, one each on the east and west wall and a central roof vent. I built the window frames out of pressure treated lumber and used the polycarbonate panels for glazing. The windows are operated by [Bayliss Autovent](#) passive openers. A temperature sensitive cylinder forces the window open as it heats up. A knurled knob at the top adjusts opening temperature. The openers work great but simply opening windows does not move enough air to maintain reasonable temperature

during full summer sun. Even with a shade cloth hung on the south face indoor temperature is significantly higher than outdoor.



To keep the sidewall windows tightly closed I used 3 lb. cable tensioners to augment the Autovent openers. These are government surplus devices made by [John Evan's Sons Inc.](#) I removed the Velcro and hooks and mounted them at the bottom of each window. The Autovent is able to lift 14 lbs. so works fine counteracting the tensioner. The roof window is heavy enough that gravity keeps it well sealed.

There are two entrance doors one from the basement and one on the west wall to the outside. The basement door has a dual pane fixed glass center section to let light into the basement. The exterior entrance door is a Larson midview storm door with a large movable screened opening to provide

additional ventilation during the summer. During the winter we add a non-opening interior storm panel to minimize heat loss.

Due to the large amount of glazing greenhouse solar gain is high but so are losses. Without a large thermal mass temperature fluctuates rapidly, dropping at night and overheating during sunny days. This requires venting excess heat during the day and adding makeup heat at night. Adding thermal mass helps moderate temperature swing by absorbing heat during the day and releasing it at night. We opted for [water barrel storage](#). Used 55 gallon polyethylene drums are cheap and water to fill them even cheaper. We use 6 55 gallon drums placed along the north wall. When I was searching for a local supplier was surprised to discover how many folks are selling them. Each barrel is painted black to maximize heat absorption. Ideally I should have used an additional 6 stacked on top but that would have consumed too much valuable space. Insufficient thermal storage means temperature fluctuation is higher than desired and without augmentation or opening the basement door greenhouse air temperature falls dangerously low during cold nights.

The floor of the greenhouse is filled with 4 feet of pea stone. Stone and masonry are great ways to store heat, the trick is to warm up the stone during the day and extract heat at night.

These limitations prompted me to embark on a project to automate greenhouse ventilation, energy storage and if needed to steal heat from the basement to maintain adequate temperature. The resulting controller is described in this paper.

## Automation Wish List

1. Reduce summertime overheating and maintain adequate winter temperature.
2. Manage humidity during the winter when greenhouse is buttoned up.
3. If a problem occurs want to be notified without having to go to the greenhouse.
4. Override automatic functions in case the controller fails or we encounter unusual conditions.
5. Manage multiple indoor and outdoor temperature sensors.
6. Built in web server so greenhouse functions may be monitored remotely.
7. Local display of greenhouse air temperature.
8. The controller is on 24/7/365 so low power consumption is important.
9. Low price and cost of ownership.

Later when I built the [2<sup>nd</sup> generation wood heat controller](#) added a 10<sup>th</sup> item to the list: communicate with the wood heat controller.

The design I ultimately came up with meets these requirements and I was able to add a few other features to boot. Being programmable allowed me to add features and tweak performance as needed.

## Summer Ventilation



The passive actuators work great to open and close the vents so I augment them with a roof mounted exhaust fan. I used a dual fan assembly designed to cool server racks mounted under the roof vent. In the picture you can see the Autovent adjustment knob poking out behind the middle of the fan on the left. The fan is designed to fit a 19" equipment rack, so it was easy to install within the ceiling joists under the roof vent. The controller monitors greenhouse air temperate to control the fan.

The fan assembly is plugged into a ceiling mounted receptacle. Because it is upside down I used a [Twist-Lock](#) receptacle to make sure the plug does not fall out.

## Thermal Storage – Stone Floor



The floor of the greenhouse consists of several feet of [pea stone](#). This represents a large thermal mass. A stone floor by itself is not a very effective storage medium because not much heat is transferred to and from the stone. To better utilize the mass I mounted a squirrel cage blower near the roof, connected to a pair of 3" PVC DWV pipes to force air through two flexible perforated pipes embedded in the stone. A centrifugal blower is a good choice for this task because backpressure is high.

The controller monitors outside air temperate and turns the blower on when temperate falls below the set point. This way the blower does not run needlessly during warm weather. During the day warm air is blown into the stone heating it up reducing the need to vent excess heat. At night air blowing through the stone extracts heat to help maintain greenhouse air temperature.

## Thermal Storage – Water Barrels



Six plastic barrels are lined up against the north wall of the greenhouse. They are under the boards on the left of the picture.

One of the temperature channels is used to monitor barrel water temperature. The water barrels are a passive thermal mass. The controller simply monitors water temperature to provide an idea of how much energy is being absorbed and released by the water.

## Freeze Protection



If air temperature cannot be maintained the controller turns on a fan that blows warm air in from the basement. The fan assembly is identical to the ceiling exhaust fan; however only a single fan is active the other is disconnected and blocked off. The basement is heated so this infuses the greenhouse with 70ish degree air. A filter keeps insects from entering the house.

During the summer a small door covers the opening to keep high temperate greenhouse air from infiltrating the basement. When greenhouse temperature drops below the set point and if the door is open the basement fan is turned on and the rock blower disabled. No reason to warm up the rock floor if we are trying to prevent inside air temperature from falling dangerously low.

The PLC monitors door state by reading a magnetically actuated switch. If the fan door is closed the basement fan is not turned on, the PLC sends out a warning email, and the rock blower is left running. If the door is closed the controller is unable to move warm air from the basement to the greenhouse. Leaving the rock fan on is the best fallback strategy to reduce the possibility of greenhouse freezing as warm air cannot be brought in from the basement. In addition to sending a warning email the basement fan status LED flashes indicating the door is closed.

## Impending Freeze Warning

If these control strategies are unable to maintain adequate temperature the freeze warning light flashes and a notification email is sent.

## Integration of Greenhouse and Wood Heat Controller

A freeze event is likely to occur in the wee dark hours of the morning when no one is logged into their computer so some other alert method is needed. The success of the greenhouse project encouraged me to design a second generation [wood heat controller](#) using another WebControl PLC. The wood heat controller has an audible alarm that is triggered during high temperature conditions so it was natural to use it for freeze notification. The 1-wire temperature sensors use three wires (power, ground and data). I wired the in house temperatures sensors with 4-wire cable so was able to use the 4<sup>th</sup> wire to communicate freeze warning to the wood heat controller. During a freeze event the controller pulls this line low activating an optocoupler in the wood heat controller. This turns the controller on, if it was off, and sounds the audible and visual alert.

House construction is extremely tight so running the fan to pump warm air into the greenhouse from the basement risks depressurizing the house. As long as the wood heat controller is active so is the fresh air fan bringing in outdoor make up air. To insure the wood heat controller is on when the greenhouse basement fan is running the greenhouse controller pulses the freeze line for 200ms when the fan is started and at 0 and 30 minutes past the hour if it is still on. This prevents the wood heat controller idle timer from turning it off. The wood heat controller ignores this short pulse and does not trigger the freeze warning.

## Humidity Control



In the initial design I neglected to consider the problem of excessive winter humidity. With the greenhouse closed up humidity was 100% on some days causing mold to grow on cold surfaces. To address the problem I added a small DC fan on the East wall exhausting through a high quality metal dryer vent. The vent flapper seals well preventing cold air from flowing back into the greenhouse. The

PLC includes a humidity sensor so I used that as primary fan control. The algorithm disables the fan if outside temperature is high, no sense running the fan if the vent windows are open. The fan is also disabled when inside temperature is very low to reduce the rate of temperature fall and minimize how much air needs to be brought in by the basement fan.

The fan is a 4-11/16" box fan powered from the 9V 1A supply used by the controller. The fan is rated for 12V but works fine at 9 volts, moving less air and drawing about 500ma. A FET is used to switch fan power.

## Solar Batch Water Heater



The greenhouse provided a convenient location to install a solar batch water heater. [Batch heaters](#) are simply water tanks heated directly by the sun. Normally they are mounted in a sealed enclosure to maximize temperature gain. I did not have enough room for an enclosure so mounted a couple of 30 gallon tanks, painted black, as high as possible on the back wall of the greenhouse. This is less efficient than putting them in an insulated box but any increase in water temperature reduces summer hot water cost.

Well water temperature varies between 45-55F during the year. The electric water heater is set to 120 degrees. Just reaching normal summer daytime air temperature of 80-90 degrees reduces energy consumption by half. An advantage of this arrangement is during winter the tanks provide an additional 60 gallons of thermal mass. It is interesting monitoring the temperature of the batch heater tanks compared to the water barrels during the winter. Being located near the roof and having a better ratio of surface area to mass they are more effective than the 55 gallon drums at capturing solar energy.

Domestic hot water is produced by a 55 gallon electric water heater located in the basement. Many years ago I augmented it with heat from our [wood stove](#). I plumbed an insulated storage tank into the water heater cold water feed and installed a heat exchanger in the stove plumbed to the preheat tank using a thermosiphon loop. Whenever the stove is in use it heats water in the preheat tank. As hot water is used the “cold” water being feed into the electric water heater is warmer than the water coming directly from the well thus saving electricity.

The solar batch heater acts as a second preheater. When hot water is used cold well water flows through the two greenhouse tanks. Temperature rise depends on sun intensity and water usage. The hot output is plumbed into the cold inlet of the wood stove preheat tank. Water from the wood stove preheat tank flows into the electric water heater to bring it up to the desired temperature. The wood stove tank can be bypassed in summer but it is pretty well insulated so being lazy I leave it in the system during the summer. I’ve documented the entire solar wood water heating system [here](#).

I was concerned the extra plumbing and tanks would impact hot water flow but that has not been a problem.

### PTRV



A Pressure Temperature Relief Valve (PTRV) valve is plumbed into the “hot” tank. It dumps water if the tank overheats or experiences excessive pressure. If water is turned off to the greenhouse and the PTRV opens there is a risk of creating a partial vacuum when it cools, potentially collapsing the tanks. A vacuum breaker is installed on the pipe connecting the two tanks letting in air if the tanks are depressurized.

## Cold Water Supply



Since I needed to supply cold water to the batch heater it was a simple matter to extend the cold water feed to a 1/4 turn hose bib to water plants. To keep dirt from clogging the stone we stretched filter fabric over the floor. This allows water to drain but prevents dirt from getting into the rock.

## Water Freeze Protection

During heavy ice and snow storms we can experience extended power outages lasting several days. Without electricity we lose well water and obviously the controller no longer functions. The system is designed to be easy to drain. Pipes slope toward drain valves and the tanks can be emptied. So far we have never had to drain the system. Even with a multiday power outage simply opening the basement door is enough to prevent the greenhouse from freezing. The plants are not happy but so far have not had any burst water pipes.

Three ball valves and two 1/4 turn boiler drains, located in the basement, allow flexible control of the batch heater. Additional valves, located in the greenhouse, are used to drain the tanks.

- Mode 1 during summer the bypass valve is closed and the feed and return valves open. This causes water to flow through the greenhouse tanks as hot water is used.
- Mode 2 during winter the bypass valve is open as is the feed valve, the return valve is closed. This bypasses the batch tanks but leaves water to the greenhouse turned on to water plants.
- Mode 3 is used to drain the system. The bypass valve is open and feed and return valves closed. Two boiler drains allow air into the feed and return lines to the greenhouse so they can be purged. Valves in the greenhouse let air into the system and drain the tanks. The tanks are higher than basement plumbing so they need to be emptied first before letting air into the basement feed pipes or water will back up into the basement.

## Lighting



The PLC also does duty as the lighting controller. This allowed me to run low voltage wiring to light switches located by each door. As a plus the web interface allows lights to be turned on/off by remote control. Pretty cool, how many greenhouses let you turn the lights on or off from a web page? The light switches are SPDT momentary contact center off. The controller latches the last switch state to turn lights on or off. Being momentary contact allows an unlimited number of switches to be used in parallel.

Two [Leviton CFL fixtures](#) are mounted on the ridge beam between the two roof pitches. The fixtures are not waterproof so I was careful to mount them in the middle of the polycarbonate panels. For extra water protection cut circular section of automotive gasket material and placed it between the fixture and plastic electrical box. They are not intended as grow lights just to provide general purpose lighting.

## Switched Receptacles

There are three duplex receptacles on the south wall and two on the north. I split the outlet so the left side is constantly on and the right one is controlled by the PLC. This feature came in handy before I modified the controller to directly power the humidity fan. Implemented humidity code to control the outlets and plugged in a wall wart power supply to power the fan. At present the switched outlets are controlled by the manual override toggle switch on the controller panel.

## Sensors

The controller supports multiple temperature sensors and a Honeywell solid state humidity sensor. In addition two of the digital inputs are used to monitor the external entry door and basement fan door.

### Temperature



The controller supports 8 Maxim/Dallas 1-wire [DS18B20](#) temperature sensors. 1-wire is a single line wired OR bidirectional communication protocol. Each device is serialized allowing multiple sensors over only three connections: 5 volts, ground and data. The sensors output temperature in digital format and are powered from the PLC's 5v output.

Most of the sensors are mounted at the end of a flexible cable protected by a metal tip. The exception is the two ambient air sensors (controller and display). They are located in a small ventilated chassis on the South wall protected from direct sunlight. Currently 7 of the 8 channels are used:

1. Outside air
2. Inside air (a 2<sup>nd</sup> dedicated sensor drives the controller's temperature display)
3. Water storage barrel
4. Not used
5. Well water at pressure tank
6. Solar batch preheater
7. Wood stove preheater
8. Electric water heater

With the exception of the solar batch heater the hot water temperature sensors are attached to the outside of the respective tank. With the batch heater I had an unused fitting so was able to locate the temperature sensor in direct contact with water. Temperature accuracy is affected by water usage. Temperature reading is more accurate if water is following through the pipe. If water has not been used for a while the reading is somewhere between tank internal temperature and ambient air temperature. This is especially pronounced with the electric water heater as the sensor is almost 4" away from the tank due to insulation.

### Outside Air



The outside air sensor is located on the North wall of the house. This required running a cable from the greenhouse at the front to the north wall at the back. Mounting was an issue as I needed the probe to measure outside air temperature but not be easily damaged. The ideal location for highest accuracy is several feet above the ground and away from the building. That was impractical so the sensor is mounted only a couple of feet above grade in the wall itself.

To protect the sensor I used a small plastic pet food dish. The sensor is mounted through a hole in the center of the base. This allows air flow around the sensor while keeping it behind the edge of the building.

### Greenhouse Air



I wanted to display greenhouse temperature on the controller front panel. The PLC cannot drive an external display; forcing me to use two 1-wire temperature sensors for internal air temperature monitoring. One feeds the PLC the other the front panel display. Using separate sensors is not ideal but the close proximity insures they accurately track one another.

The 1-wire protocol is open collector master slave. This allows both the PLC and display sensors to be powered by the controller's 5 volt supply. Only the PLC and display data signals need to be kept separate and routed to the respective device.

The temperature sensors are located in a small ventilated box located on the south wall of the greenhouse below the glazing. This keeps them out of direct sunlight for more accurate readings. The humidity sensor is located in the same box as well as a terminal block in case we ever need to add a sensor at that location.

### Water Barrel

To track water barrel temperature I connected a 1-wire sensor and dropped it into one of the drums through a hole in the bung cap.

### End-to-End Domestic Hot Water

Four sensors are used to monitor the hot water system. These are not involved in greenhouse control they simply provide readings at various locations of the hot water system. Sensor 5 monitors well pressure tank, #6 greenhouse batch heater, #7 wood stove preheat tank, and #8 electric water heater.

### Humidity



The controller uses a Honeywell [HIH-4000](#) sensor to measure relative humidity. This is an analog device powered from the PLC's 5V supply. The humidity sensor is mounted in the same chassis used for the temperature sensors. Being analog I wanted to make sure accuracy was not affected by digital noise so I ran separate power, ground, and data.

## Door Monitoring

Magnetic reed witches are used to monitor the status of the main entrance door and the basement fan door.

## Web Interface

The WebControl web interface is pretty barebones but it gets the job done.

# CAI WebControl PLC

Version: v03.02.17d    IpAddress: 192.168.2.104    Name: GREENHOUSE    03/01/2015    16:35:05

## System Status

**System Status**  
**Output Control**  
**x10 Control**  
**I/O Setup**  
**Notify Setup**  
**Temperature Sensor Setup**  
**PLC Program**  
**General Setup**  
**Network Setup**  
**Help**

Outputs								
	1	2	3	4	5	6	7	8
TTL Output Bits	1	0	0	0	0	0	1	0
32 Bit Signed Vars	3338	246	1	554	438	18	100	0

Inputs								
	1	2	3	4	5	6	7	8
TTL Input Bits	0	0	1	0	0	1	0	0
Temperature Sensors	31.8 F	50.0 F	54.1 F	unbound	45.3 F	54.1 F	106.8 F	102.3 F
Temperature Sensor Status	ok	ok	ok	unbound	ok	ok	ok	ok
Analog Inputs	0	0	1	0	0	0	0	0
Humidity Sensor	86 %							
Counter	0							
Frequency	0							

Refresh

System Status page displays inputs and outputs as well as 8-variables used by the code. Being able to display values facilitates troubleshooting. VAR1 displays basement fan run time in seconds since the previous report. VAR 4 is high air temperature and VAR 5 low since the last report. The controller has another 8 variables (RAM) accessible to user code but they are not displayable.

The screenshot is a winter day when the wood stove is operating. Temperature sensor 1 measures outside air temperature. Sensor 2 is air temperature within the greenhouse and sensor 3 is the temperature of one of the water barrels. The last four sensors monitor various locations of the hot water supply. Sensor 5 is the well pressure tank; well water temperature varies little throughout the year. Sensor 6 is the hot outlet of the greenhouse solar batch water heater. Temperature sensor 7 is the wood stove thermosiphon storage tank and sensor 8 is the electric water heater. The water heater thermostat is set to 120 F. Because the sensor is attached to the hot water outlet pipe, rather than being immersed in water, the reading varies significantly depending if hot water has been used recently.

## Email Alerts

No automation system is complete without alarm notification of dangerous or improper operating conditions. WebControl allows up to 8 preconfigured emails to be dispatched by user code.

## Daily Status Email

The controller's web interface is pretty limited and does not include logging capability. I added code to send out a morning and evening email. The body of the email includes digital input and output status and current temperature sensor and humidity sensor readings. Emails are generated at 6AM and 6PM. The firmware does not compensate for daylight savings time but in this case that is actually a plus since the report occurs at the same "Sun" time throughout the year.

Of particular utility is VAR1 that reports how many seconds the basement fan has run since the previous report, and VAR4 high and VAR5 low air temperature during the same period.

Greenhouse Update: Morning GREENHOUSE To: Tom Schmidt;	Greenhouse Update: Evening GREENHOUSE To: Tom Schmidt;
GREENHOUSE Sent at: 06:00:00 On the 03/02/2015	GREENHOUSE Sent at: 18:00:00 On the 03/01/2015
Digital Inputs: I1=0 I2=0 I3=1 I4=0 I5=0 I6=1 I7=0 I8=0	Digital Inputs: I1=0 I2=0 I3=1 I4=0 I5=0 I6=1 I7=0 I8=0
Analog Inputs: AIP1=3 AIP2=2 AIP3=4 AIP5=0 AIP6=0 AIP7=0 AIP8=0	Analog Inputs: AIP1=0 AIP2=0 AIP3=0 AIP5=0 AIP6=0 AIP7=0 AIP8=0
TTL Output States: TTL1=0 TTL2=0 TTL3=0 TTL4=1 TTL5=0 TTL6=0 TTL7=0 TTL8=0	TTL Output States: TTL1=1 TTL2=0 TTL3=0 TTL4=0 TTL5=0 TTL6=0 TTL7=0 TTL8=0
Temperature Sensors: T1=25.7dF T2=44.7dF T3=51.4dF T4=U T5=44.7dF T6=48.3dF T7=137.8dF T8=95.3dF	Temperature Sensors: T1=31.2dF T2=47.4dF T3=53.7dF T4=U T5=45.5dF T6=53.6dF T7=112.1dF T8=111.7dF
Humidity Sensor: H=89%	Humidity Sensor: H=89%
VARs: VAR1=506 VAR2=246 VAR3=1 VAR4=460 VAR5=440 VAR6=18 VAR7=100 VAR8=0	VARs: VAR1=3338 VAR2=246 VAR3=1 VAR4=554 VAR5=438 VAR6=6 VAR7=100 VAR8=0

## User Settings Report

### General Setup

#### Clock Setup

Time Zone

Set Date Time

Note: time format MM/DD/YYYY HH:MM:SS

☐ Day Light Saving ON

#### Options

UROM1  User defined 32 bit int

UROM2  User defined 32 bit int

UROM3  User defined 32 bit int

UROM4  User defined 32 bit int

TDSO  uS (1-Wire Data Sample Timing)

☒ Web Polling Enabled

The General Setup screen is a convenient way to change set points without the need to reload code.

- ❖ UROM1 sets ceiling fan temperature
- ❖ UROM2 sets rock fan outdoor temperature
- ❖ UROM3 sets basement fan temperature
- ❖ UROM4 sets humidity fan % relative humidity

To make setting more user friendly at power up and each time any of the UROMx settings are changed the parameter checker is invoked and an email sent indicating if values are correct and information about the correct range and units.

<p>Greenhouse UROMx Setpoint within range</p> <p>GREENHOUSE</p> <p>To: Tom Schmidt;</p> <hr/> <p>UROM1 Ceiling fan 75 - 95F  UROM2 Rock fan 35 - 60F  UROM3 Basement fan 35 - 60F  UROM4 Humidity fan 60 - 90%</p> <p>GREENHOUSE Sent at: 15:05:22 On the 03/01/2015</p> <p>Digital Inputs:  I1=0 I2=0 I3=1 I4=0 I5=0 I6=1 I7=0 I8=0</p> <p>Analog Inputs:  AIP1=3 AIP2=0 AIP3=1 AIP5=0 AIP6=0 AIP7=0 AIP8=0</p> <p>TTL Output States:  TTL1=1 TTL2=0 TTL3=0 TTL4=0 TTL5=0 TTL6=0 TTL7=1 TTL8=0</p> <p>Temperature Sensors:  T1=33.8dF T2=53.2dF T3=54.1dF T4=U T5=45.3dF T6=55.4dF T7=110.4dF T8=120.7dF</p> <p>Humidity Sensor:  H=80%</p> <p>VARs:  VAR1=3338 VAR2=246 VAR3=1 VAR4=554 VAR5=438 VAR6=18 VAR7=100 VAR8=0</p>	<p>Greenhouse UROMx Setpoint out of range</p> <p>GREENHOUSE</p> <p>To: Tom Schmidt;</p> <hr/> <p>UROM1 Ceiling fan 75 - 95F  UROM2 Rock fan 35 - 60F  UROM3 Basement fan 35 - 60F  UROM4 Humidity fan 60 - 90%</p> <p>GREENHOUSE Sent at: 15:05:26 On the 03/01/2015</p> <p>Digital Inputs:  I1=0 I2=0 I3=1 I4=0 I5=0 I6=1 I7=0 I8=0</p> <p>Analog Inputs:  AIP1=0 AIP2=0 AIP3=1 AIP5=0 AIP6=0 AIP7=0 AIP8=0</p> <p>TTL Output States:  TTL1=1 TTL2=0 TTL3=0 TTL4=0 TTL5=0 TTL6=0 TTL7=1 TTL8=0</p> <p>Temperature Sensors:  T1=33.8dF T2=53.2dF T3=54.1dF T4=U T5=45.3dF T6=55.4dF T7=110.4dF T8=120.7dF</p> <p>Humidity Sensor:  H=80%</p> <p>VARs:  VAR1=3338 VAR2=246 VAR3=1 VAR4=554 VAR5=438 VAR6=18 VAR7=100 VAR8=0</p>
--	--

## Freeze Warning

The point of having a greenhouse is to extend the growing season by keeping air temperature above freezing. If the water, rock storage and basement augmentation functions are not adequate to maintain air temperature the controller flashes a freeze warning LED on the front panel and sends a warning email. A pushbutton on the controller resets the alarm. If the freeze warning is reset while air temperature is still below the warning set point the LED is turned off for a couple of seconds and another freeze warning sequence begun.

The freeze warning event is communicated to the wood heat controller, activating an audible and visual alarm.

## Basements Fan Door Warning

When the controller needs to turn on the basement fan it reads the state of the fan door switch. If the door is closed it flashes the basement fan status LED and sends a warning email.

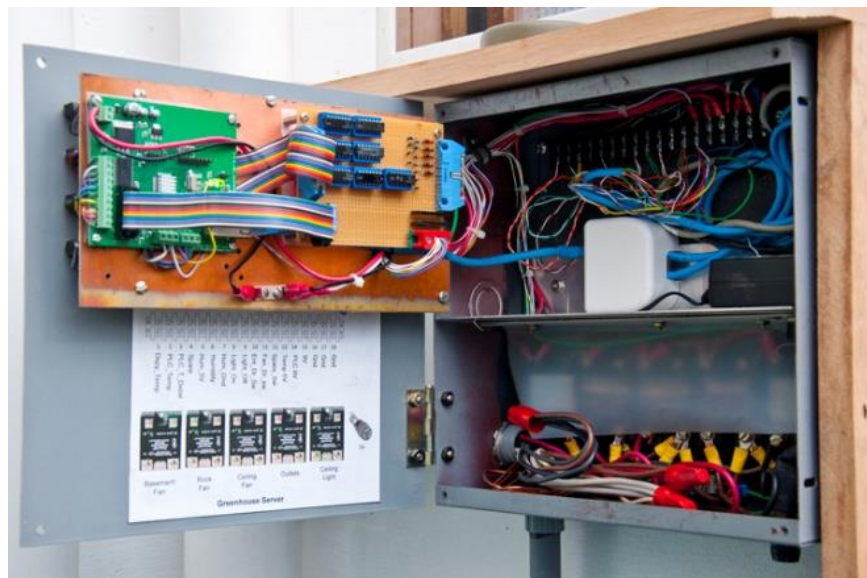
## Temperature Sensor Failure

If one or more temperature sensors fail a notification email is sent. It takes several seconds at boot time for the controller to initialize the temperate sensors. Testing is delayed when system powers up to eliminate spurious fault notification. The 1-wire bus is a wired OR open collector scheme. It is sensitive to noise ingress causing temporary failure of one or more sensors. To prevent unnecessary alerts sensor fault notification is debounced. When the controller reports a failed sensor a counter is set to 100. If the sensor is still bad after 100 passes through user code (about 5 seconds) the alert email is generated, if not the counter is reset.

Once an alert has been sent sensors must return to the OK state to reset the warning. That way only a single email is sent per failure event.

## System Implementation

The controller is mounted on the east wall near the rear of the greenhouse. The temperature and humidity sensors are mounted on the south wall in a small ventilated enclosure. The Humidity control exhaust fan is mounted to the immediate right of the controller.



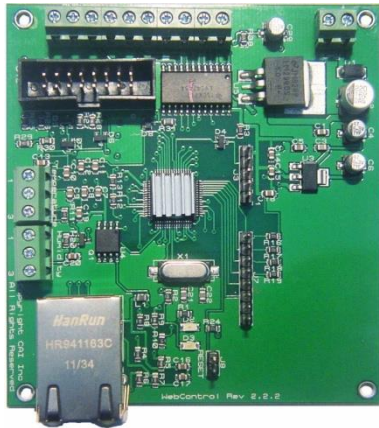
The controller is built into an 11" square electrical box. I installed an aluminum separator between line and low voltage compartment. The bottom section contains solid state relays to control AC loads. Initially I used SSRs to control all loads but ran into a problem with the CFL ceiling lights. The CFLs draw so little current the snubber circuit used to protect the SSR output passed enough current to cause the lights to occasionally flash. The solution was to replace the ceiling light SSR with an EMR. I mounted a small relay on a perf board cut to the same size as the SSR and wired a diode across the coil. The 7407 driver is able to control the relay directly so it made for a simple replacement. A flexible plastic shield covers the relays preventing accidental contact with mains voltage.

A 9V 1A DC "wall wart" style switching power supply powers the system. The supply plugs into a receptacle mounted on the divider protected by a fuse installed at the bottom of the cabinet.

The top portion has an 18-position terminal strip to connect low voltage field wiring; and an Ethernet jack connecting the controller to our home network.

The controller, interface PCB, override switches, status LEDs and temperature display are mounted on the hinged front panel. The humidity fan DC switching circuitry is mounted on small board attached to the fan toggle switch and LED. This minimizes interconnect wiring between front panel and logic board and kept high current fan load off the interface board.

## WebControl PLC



The heart of the system is a low cost web server and programmable logic controller manufactured by [CAI networks](#) and available, like many of the other items used in this project, from eBay vendors.

The controller was primarily designed to monitor and control temperature in a data center environment, but its low cost and PLC capability made it ideal for my purpose.

### WebControl Features

1. 8 1-wire temperature sensors inputs
2. Humidity sensor input.
3. 8 digital outputs
4. 8 digital inputs
5. UTP Ethernet port
6. Web server
7. Real Time Clock (RTC) synced via Network Time Protocol (NTP)
8. Low power

## Interface PCB

I designed a simple interface board to provide external logic functions and ESD protection. The control panel has toggle switches to select how the various outputs are controlled. Each output except lighting can be set to: Off, On, or Auto. Normally switch overrides like this would be read by the controller and processed in software. However since there are only 8 inputs and 8 outputs I implemented the switch override function in hardwired logic.

I wanted the Freeze warning LED and Basement fan LED to flash when there is a problem. To eliminate the need to create time dependent PLC code I implemented the flash function in hardware. The controller has a status LED that flashes indicating the controller is alive. That signal is brought into the interface board to flash the appropriate LEDs.

The other function of the interface board is to protect the controller from ESD damage. I would much rather replace a SSI DIP TTL chip on the interface board than the entire controller. The protection scheme is pretty basic. Digital inputs are feed through a series resistor then to a pull-up. The output of the pull-up is clamped to Vcc and Ground by a pair of diodes. The 1-wire interface to the controller and display are bidirectional so I used the clamp diodes but not the series or pull-up resistor. The humidity sensor is run barefoot. Being an analog signal did not want to risk affecting accuracy. Outputs, except freeze, are not protected as they do not leave the chassis.

## Temperature Display



I wanted to display air temperature locally, but the controller does not have the ability to drive a display. I purchased a self-contained [LED thermometer](#) module. I chose a unit that uses the same 1-wire temperature sensor as the WebControl and located it in the same box as the controller's temperature and humidity sensors. Using two sensors for the same reading is not ideal since tolerances may cause measurement to may vary slightly but they are close enough for our purposes. As a plus the LED provides a nice night light and confirmation the controller is powered up.

## DC Power

The 9V 1A wall wart style switching power supply is connected to the low voltage field wiring terminal strip. It plugs into a receptacle located on the chassis separator bracket. 9 volts is feed to the: PLC, SSRs, front panel LEDs, humidity fan, and the front panel temperature display. 5 volts, required by the sensors and interface logic, is provided by a linear regulator on the PLC. I added a heat sink to the regulator as a precaution for hot summer days. The PLC, interface PCB, SSRs, and LEDs draw 250 - 300ma from the 9 volt supply. The humidity fan draws 500ma. The switching supply is very efficient minimizing waste heat dumped into the enclosure.

## AC Power



Greenhouse power is supplied by a dedicated 20 Amp 120 volt circuit protected by a GFCI. This is an important safety consideration given the close proximity of electricity and water. I choose to use a GFCI circuit breaker rather than a GFCI receptacle because I wanted to split each receptacle into a switched and unswitched side.

PVC conduit protects exposed wiring on the east and south walls. Plastic conduit is inexpensive, does not rust, provides mechanical and water protection of exposed wiring. The north wall between basement and greenhouse is an insulated stud wall. Wiring in the wall is NMC cable.

The [National Electrical Code](#) (NEC) requires protection when receptacles are used in web locations. With the exception of the twist-lock receptacle used to power the ceiling vent fan all outlets have a [plastic protective cover](#).

## Sensor Cabling

I used two Cat5e cables to interconnect the various sensors. The preferred topology for 1-wire devices is a daisy chain. A daisy chain minimizes the negative effects of reflections due to the unterminated nature of the bus. Temperature sensors are located both in the greenhouse and the house. Within the greenhouse I looped the sensor cable to all locations that require temperature sensors or other inputs then back to the controller. This allowed me to terminate both ends of the cable within the controller. This provides several benefits. I terminated both ends of greenhouse cable's power and ground conductors effectively doubling the wire gauge, reducing voltage drop. Currently I'm only using 7 of the 8 loop cable conductors, having access to both ends of the cable means if I need to add additional inputs or outputs I can cut the loop to allow switches and sensor to feed one end or the other. The loop also provides some measure of fault tolerance.

Several temperature sensors are external to the greenhouse. The near end of the looped cable's 1-wire temperature data lead is terminated at the PLC and the distal end is extended into the house along with power and ground, maintaining the optimum daisy chain configuration through both wire segments. Used a 19-gauge 4-wire cable I had laying around for the house cable to connect the outside air temp, well water temp, the wood stove preheat tank and electric water heater temp sensors. The 4<sup>th</sup> wire of the house cable allows the greenhouse to signal the wood heat controller about freeze events.

Maxim/Dallas 1-wire application notes provide recommendations to deal with signaling problems over long networks. Even though total cable length is about 35 meters the system operates flawlessly without needing any of those tweaks. By 1-wire standards this is a medium sized network.

I needed more than 8 conductors for greenhouse sensors so ran a second Cat5e cable from the controller to the sensor box. This cable provides point to point wiring for the display temperature sensor and the humidity sensor.

Two Cat5e cables provide dual Ethernet LAN drops, only one of which is being used. These cables connect to the Ethernet patch panel within the house.

## **To-do List**

I'm very pleased with the results but as typical with projects have no shortage of ideas for future modifications.

- 1) I plan to add another temperature sensor embedded into the stone floor to monitor its temperature.
- 2) Better status communication with wood heat controller. Currently the wood heat controller reports greenhouse controller health status based on the presence of 5V on the temp sensor lead. The firmware I'm now using on both systems enables IP based communication between the controllers. Taking advantage of this will improve health reporting.

## **Conclusions**

This has been a fun project and has greatly improved the performance of our greenhouse.

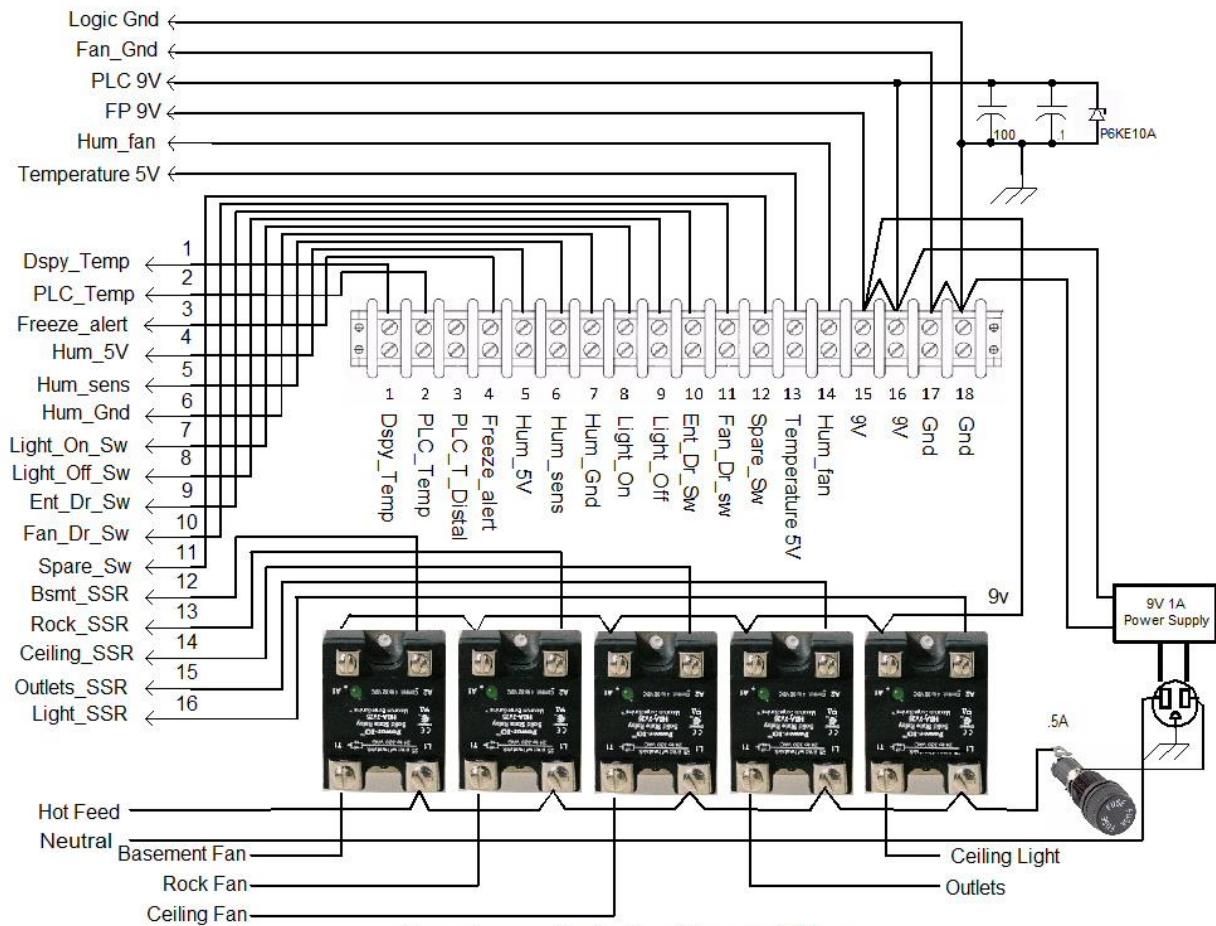
For anyone considering this type of project it is important to think about life cycle issues. The greenhouse structure and wiring have an extremely long life expectancy compared to the individual electronic modules. Think about how to handle a module failure 5 or 10 years down the road. Perhaps it is the packrat in me but given the inexpensive nature of the major components I've purchased spares that can be placed in service without mechanical, electrical, or software modification in the event of failure.

## Appendix A Schematics

### Chassis Wiring

A 16-position DIP plug connects the interface board to sensor inputs and SSR DC control. Power and ground use 22 AWG wire to minimize voltage drop. Temperature 5V is obtained from the PLC and used to power the PLC and display temperature sensors. Power and ground for the humidity sensor is connected directly to the PLC to minimize effects of digital noise.

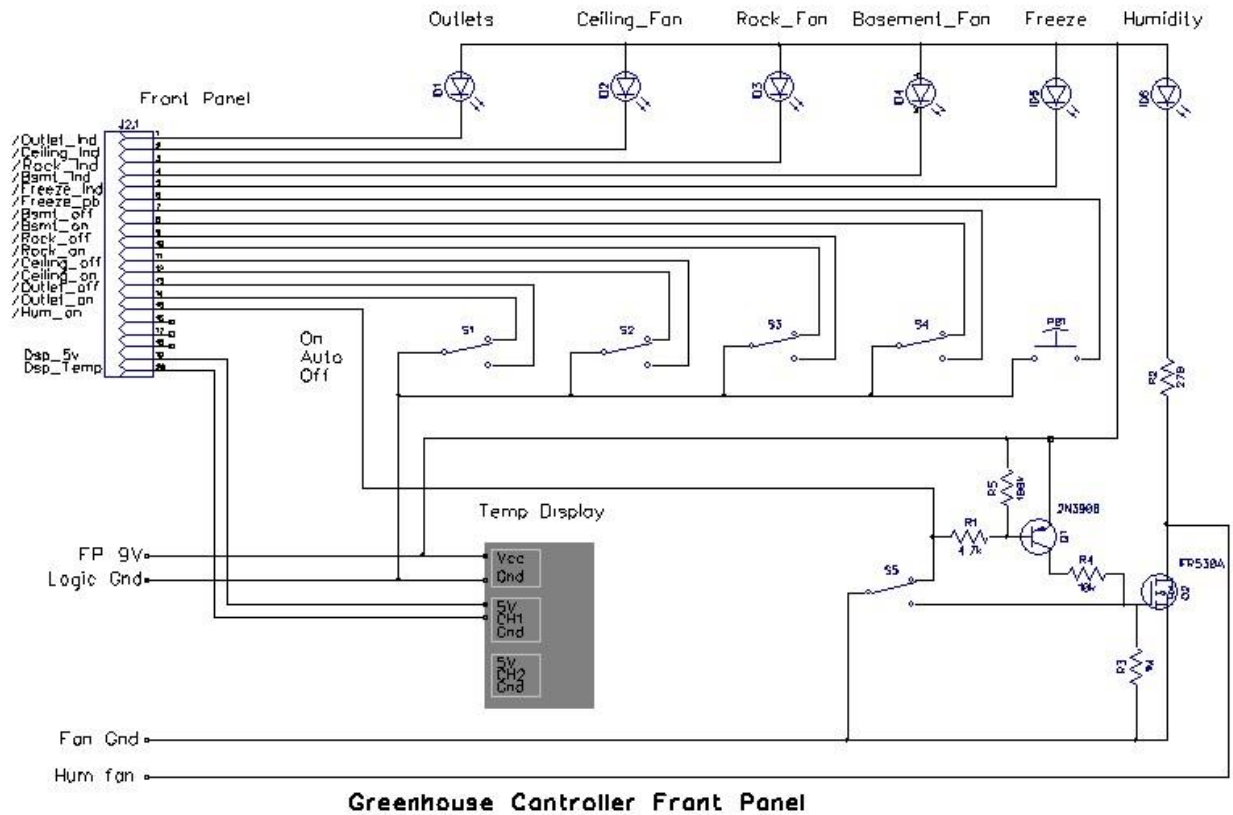
A .5 amp fuse limits fault current to the 9 volt power supply.



**Greenhouse Controller Chassis Wiring**

## Front Panel Wiring

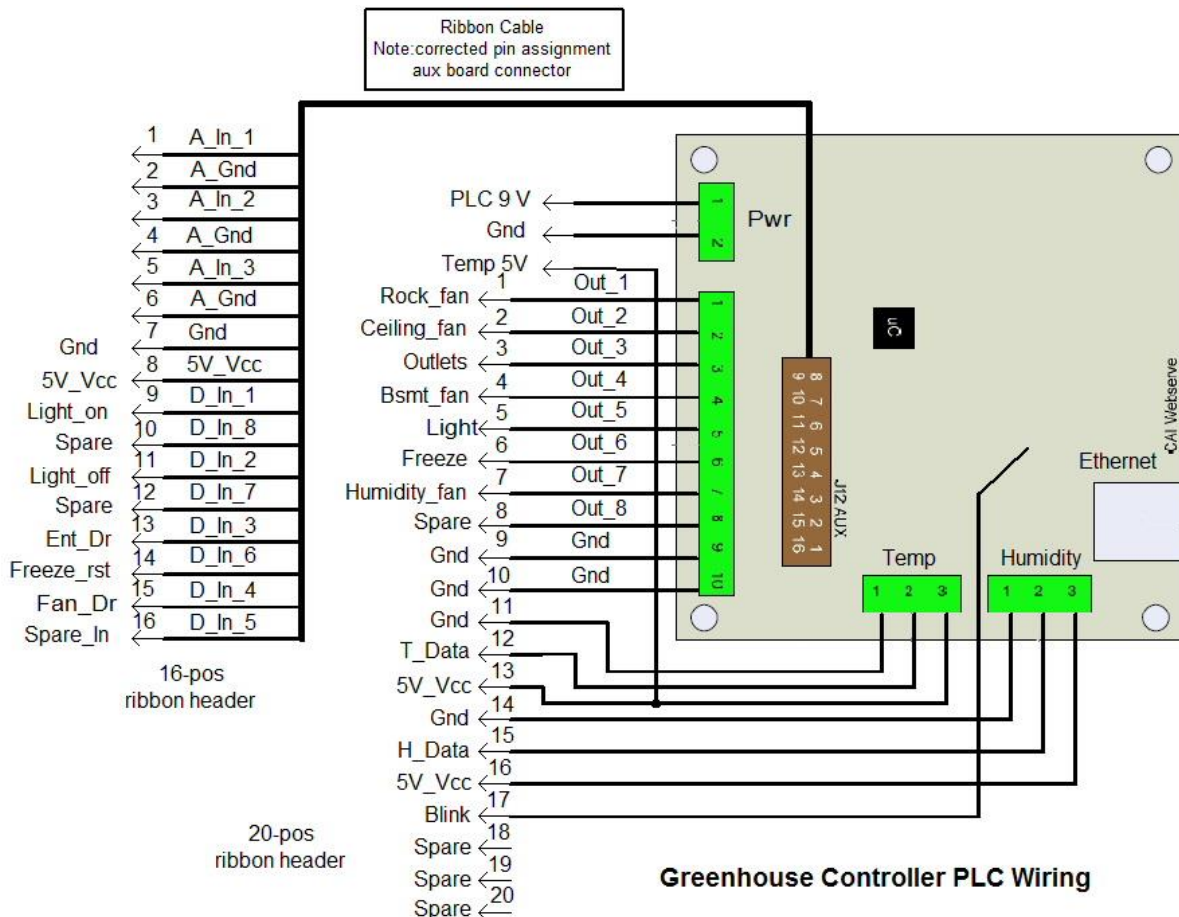
Front panel wiring picks up all the switches and LEDs in addition to the 1-wire temperature display module. The switching circuitry for the humidity fan is located on a small perf board mounted to the rear of the fan toggle switch and status LED. A FET low side switch is used to minimize fan voltage drop. Fan is rated for 12 volts but operates fine at 9, with obviously reduced air flow.



## PLC Wiring

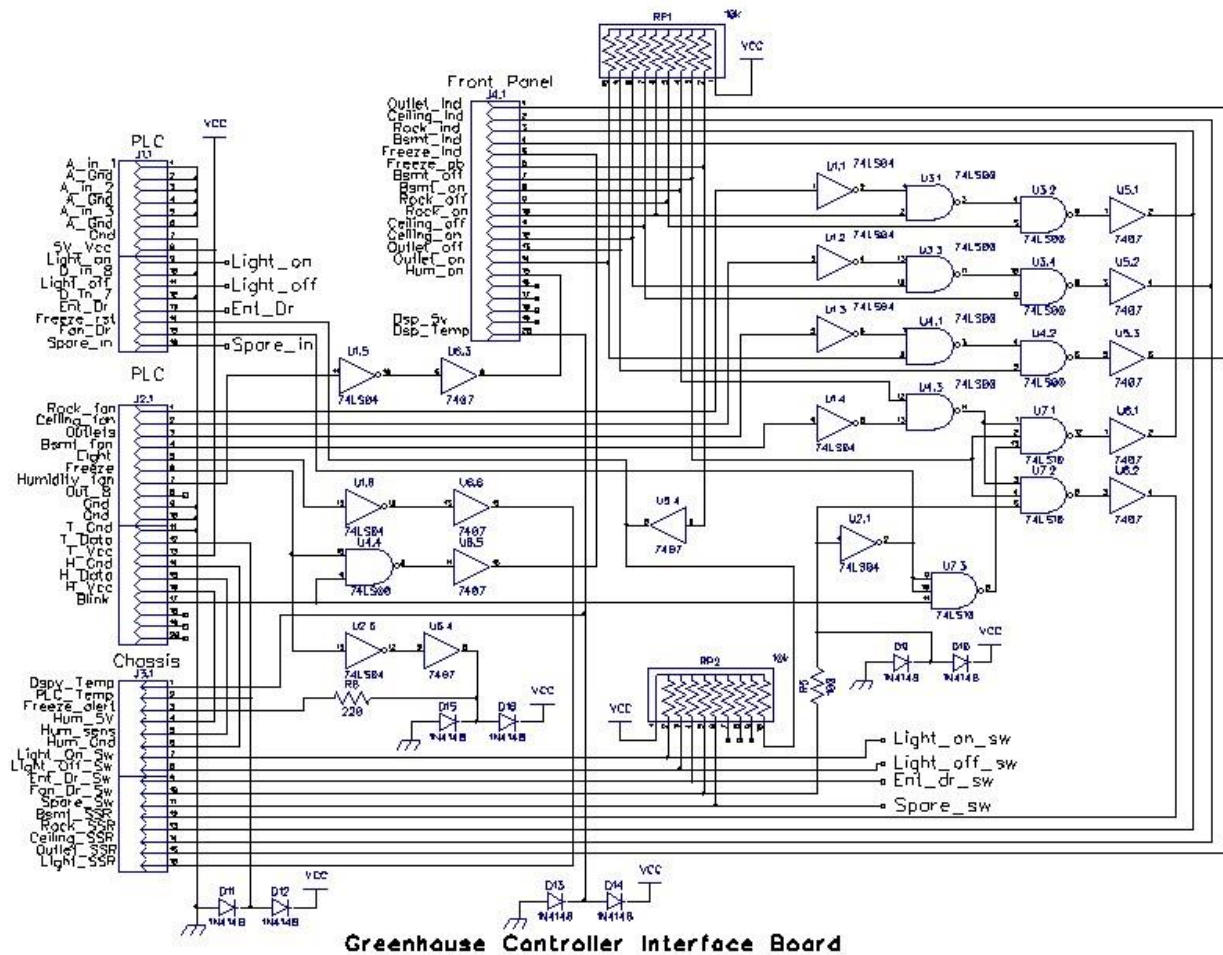
Two ribbon cables connect the PLC to the Interface board. A 16-pin header to header cable connects analog and digital inputs. Note: the PLC number's the header sequentially. Conventional practice is to alternate pin numbers on ribbon cable headers so numbers are sequential across the cable. The other cable terminates at small barrier strips. The flash lead is soldered to the flashing health LED on the PLC.

5V for temp sensors is picked up directly from the PLC temperature header and routed to the field wiring terminal strip.



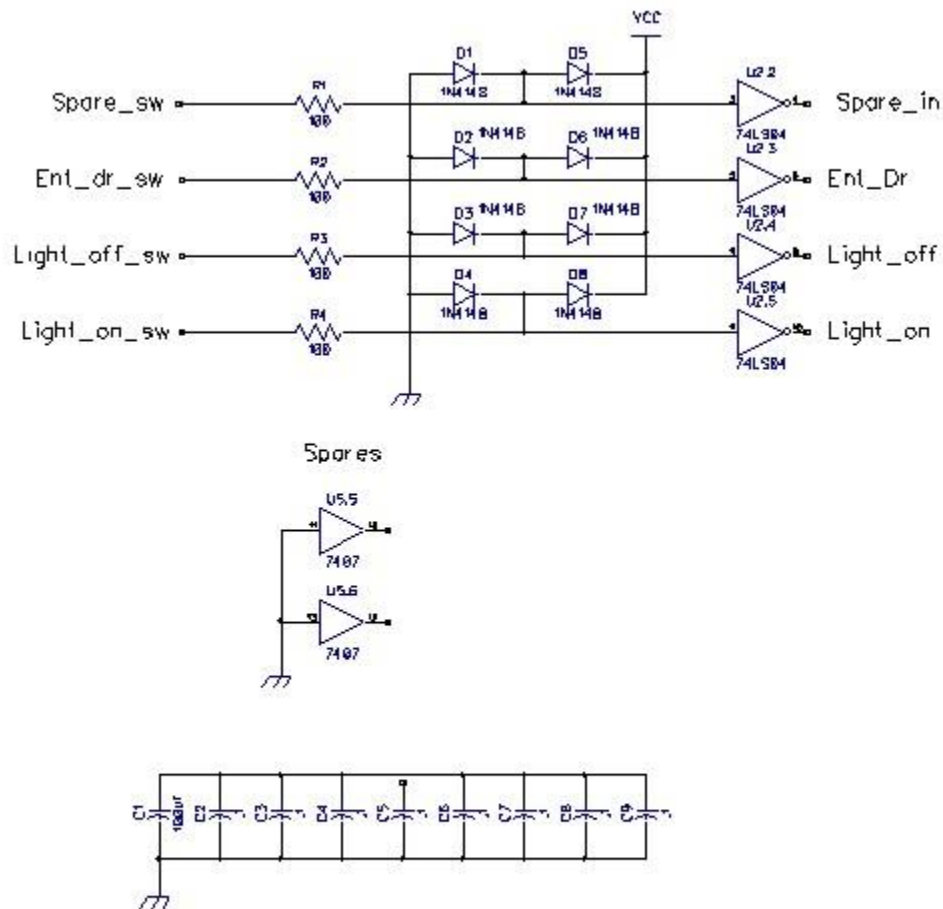
## Interface - Logic

The Interface board is the central interconnect between the various portions of the controller and provides simple hardware logic and ESD protection. The PLC interface consists of a 16 and 20 pin header. Front panel wiring terminates to a 20-pin header providing lots of spares. And lastly a 16-pin DIP plug connects to the LV terminal board and SSR control.



## Interface – Switch Conditioning

This page shows switch conditioning and termination of unused spare gates.



## Greenhouse Controller Interface Board - Spares & Switch Conditioning

## Sensor Wiring

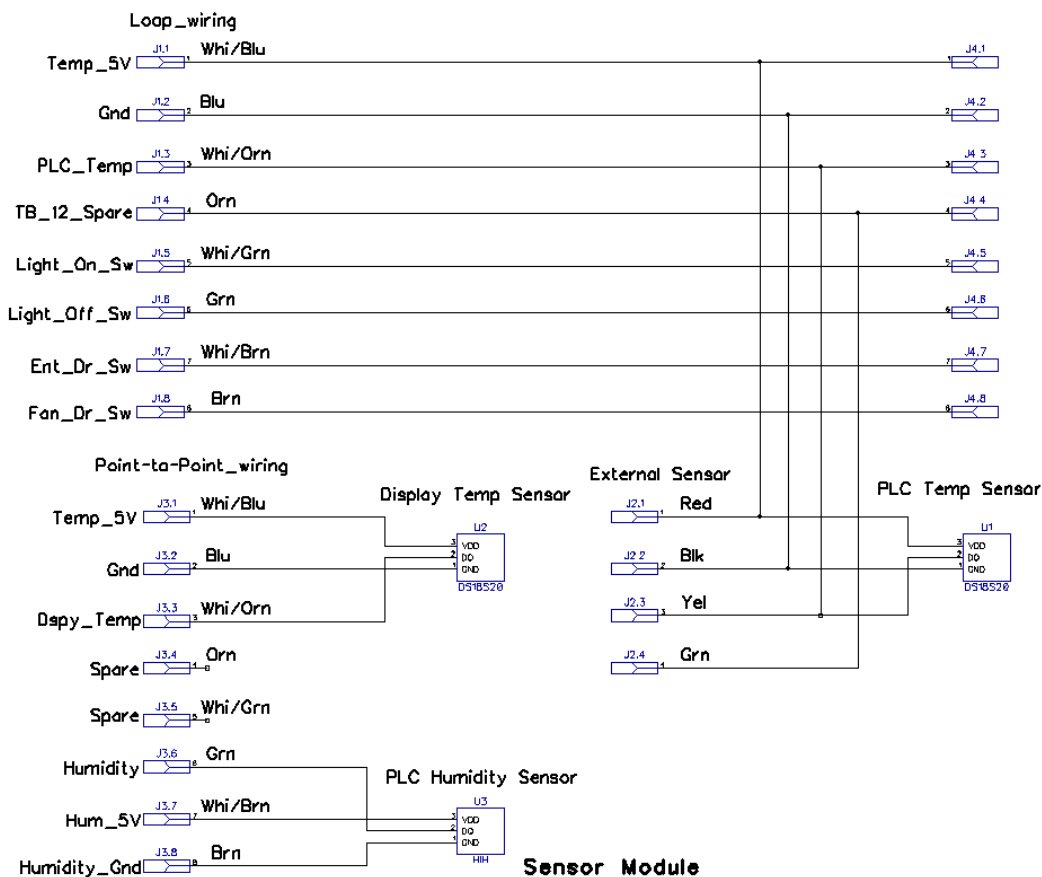
The loop cable originates at the controller and travels along all four greenhouse walls then returns to the controller. Loop wiring is routed through the light switches by each entrance door and connected to the magnetic door switches. A four conductor cable connects the 1-wire PLC temperature sensors in the house and provides freeze notification to the wood heat controller.



At various locations I installed 4-position terminal blocks (old style telephone 42A junction blocks) to facilitate adding additional temperature sensors.

The point to point cable originates at the controller, runs across the south wall of the greenhouse and terminates at the ventilated chassis. The display temperature and PLC humidity sensor use this cable.

A small ventilated chassis is located on the south wall. It houses temperature sensors for the PLC and digital display, the humidity sensor and a 4-position terminal block to allow attachment of an additional cabled temperature sensor.



## Appendix B PLC Configuration

Screenshots of various WebControl configuration pages.

### Network Setup

This page selects DHCP or static IP configuration. It also allows setting the NetBIOS name. Web access to the controller can be unrestricted or require username/password login.

WebControl time can be set automatically via NTP or manually. The controller does not have a built in battery backed real time clock, time must be set each time controller is powered up or firmware sets default date/time. I run my own LAN based NTP time server so point the controller at that time server rather than one on the Internet.

Pressing “Send” updates network setting and reboots the PLC. This is a handy way to reset the PLC remotely even when not making any changes to network settings.

## Network Setup

**MAC Address:** 00:22:12:02:01:B0

Network Configuration	
NetBIOS Name	Greenhouse
Static IP Address	192.168.2.104
Subnet Mask	255.255.255.0
Gateway	192.168.2.1
Primary DNS Server	192.168.2.1
Secondary DNS Server	192.168.2.1
Username	admin
Password	password
DHCP Enabled	<input type="checkbox"/>
Web Login Enabled	<input type="checkbox"/>
HTTP Port	80
NTP Server if not use default	
NTP server IP	192.168.2.100
Access Limit	
IP Address 1	0.0.0.0
IP Address 2	0.0.0.0
IP Address 3	0.0.0.0
IP Address 4	0.0.0.0

Send

## I/O Setup

Individual outputs can be configured to allow PLC control and direct control from a browser. In most cases PLC code will force the output to correct value even if web browser attempts to set or reset it but if not explicit control can be determine on this page. The active polarity of the outputs is set from this page.

## I/O Setup

- ☒ Global PLC Enable
- ☐ X10 Enable
- ☐ Counter Enable on TTL Input 1
- ☐ Frequency Measurement Enable On on TTL Input 1
- ☒ TTL Input 1 Enable

TTL Inputs								
	1	2	3	4	5	6	7	8
State Inverted	<input type="checkbox"/>	<input type="checkbox"/>	<input type="checkbox"/>	<input type="checkbox"/>	<input type="checkbox"/>	<input type="checkbox"/>	<input type="checkbox"/>	<input type="checkbox"/>

TTL Outputs								
	1	2	3	4	5	6	7	8
Browser Control Enabled	<input checked="" type="checkbox"/>	<input checked="" type="checkbox"/>	<input checked="" type="checkbox"/>	<input checked="" type="checkbox"/>	<input checked="" type="checkbox"/>	<input checked="" type="checkbox"/>	<input checked="" type="checkbox"/>	<input checked="" type="checkbox"/>
Plc Control Enabled	<input checked="" type="checkbox"/>	<input checked="" type="checkbox"/>	<input checked="" type="checkbox"/>	<input checked="" type="checkbox"/>	<input checked="" type="checkbox"/>	<input checked="" type="checkbox"/>	<input checked="" type="checkbox"/>	<input checked="" type="checkbox"/>
State Inverted	<input type="checkbox"/>	<input type="checkbox"/>	<input type="checkbox"/>	<input type="checkbox"/>	<input type="checkbox"/>	<input type="checkbox"/>	<input type="checkbox"/>	<input type="checkbox"/>

## Temperature Setup

1-wire devices are individually serialized. The controller detects temperature sensors at power up but they must be manually assigned to a particular sensor ID and units of measure specified.

## Temperature Sensor Setup

Configured Sensors		
Sensor	ROM Code	Units
T1	280C97960300 ▾	<input type="radio"/> °C <input checked="" type="radio"/> °F
T2	28D50BC50300 ▾	<input type="radio"/> °C <input checked="" type="radio"/> °F
T3	28B64E2C0300 ▾	<input type="radio"/> °C <input checked="" type="radio"/> °F
T4	000000000000 ▾	<input type="radio"/> °C <input checked="" type="radio"/> °F
T5	281483AA0300 ▾	<input type="radio"/> °C <input checked="" type="radio"/> °F
T6	28BF936D0300 ▾	<input type="radio"/> °C <input checked="" type="radio"/> °F
T7	2877A3830200 ▾	<input type="radio"/> °C <input checked="" type="radio"/> °F
T8	28D0AF830200 ▾	<input type="radio"/> °C <input checked="" type="radio"/> °F

## Email Setup

Email can be set up to use any TCP/IP port but the unit does not support SSL. In addition to email this page also configures HTTP GETs (not used in this example).

Up to eight email messages may be configured and each can be sent to a different address. In addition to the subject line and message body the system automatically appends information from the System Status page.

I noticed a problem setting message body with some web browsers (Firefox, chrome, IE10) the second character of each line after the first is lost. Setting message body works fine using IE8.

EMAIL Messages				
Message ID	To Address	Message Subject	Message Body	
EM1	tom@tschmidt.com	Greenhouse Warning Freeze Alert		Test
EM2	tom@tschmidt.com	Greenhouse Warning Basement Fan Door Closed		Test
EM3	tom@tschmidt.com	Greenhouse Sensor Failure		Test
EM4	tom@tschmidt.com	Greenhouse UROMx Setpoint out of range	<div> <div> <div>▲</div> <div>☰</div> <div>▼</div> </div> <div>           UROM1 Ceiling fan            75 - 95F            UROM2 Rock fan 35            - 60F            UROM3 Basement fan         </div> </div>	Test
EM5	tom@tschmidt.com	Greenhouse UROMx Setpoint within range	<div> <div> <div>▲</div> <div>☰</div> <div>▼</div> </div> <div>           UROM1 Ceiling fan            75 - 95F            UROM2 Rock fan 35            - 60F            UROM3 Basement fan         </div> </div>	Test
EM6	tom@tschmidt.com	Greenhouse Debug		Test
EM7	tom@tschmidt.com	Greenhouse Update: Morning		Test
EM8	tom@tschmidt.com	Greenhouse Update: Evening		Test

## Appendix C PLC code

Greenhouse Controller  
T. Schmidt

### \*\*\*\*\* Change Log \*\*\*\*\*

- |            |  |
|------------|--|
| 3/2/2015   | Bypassed PLC series diode on terminal strip and disconnected 10Uf cap on switched fan. Added heatsink to PLC 5V linear regulator.  |
| 2/3/2015   | Changed VAR8 to RAM8 to free up VAR8 for debug. Freeze bit pulsing at 0/30 minutes not working. Fixed bug, REALCOLD stops being called once there is an increase in temp. Added call to FRZWINK from ADDSECOND - this insures if fan is still running at 0/30 minutes past the hour Freeze will get pulsed again.  |
| 1/29/2015  | Added Freeze bit pulse at 0 & 30 minutes when basement fan running to insure wood stove controller does not timeout during extreme cold if fan runs longer than wood stove controller timeout.   |
| 1/23/2015  | Added code to pulse Freeze bit for 200ms when basement fan started. This wakes up wood stove controller to insure fresh air fan is on. House is so tight GH basement fan tends to depressurize house.  |
| 1/6/2015   | Fixed bug, rock fan not turned off when inside temp low and basement fan running   |
| 12/30/2014 | 1) Changed UROM1-3 entry to degrees (from .1F) to make temp setting more user friendly.<br>2) Reduced basement fan hysteresis to 1F (from 2F) to reduce fan run time in cold weather. Fan will run more frequently but for shorter period. This will also reduce high GH temp by 1F saving a few house BTUs.   |
| 12/7/2014  | Added debug email sent at power up. Looks like intermittent PS problem. This is consistent with occasionally GH fail email from Wood Stove cntrl.<br><br>Update 2/1/2015 - Occasional system reset caused by PS droop when humidity fan turned on. Need to rework hardware to remove PLC power diode to increase voltage to PLC and increase bulk capacitance on 9V supply. Will add heatsink to 5V linear reg on PLC. |
| 11/30/2014 | Removed UROM bounds email inhibit on power up. Temp logger/basement fan run time counter getting reset randomly again.   |
| 1/2/2014   | Added basement fan run time logger. VAR1 reports number of seconds   |

basement fan on since last morning/evening email. Count is reset when morning and evening email sent. Removed temperature logger debug code. Fault no longer occurring - have no idea why.

11/25/2013 Changed VAR1 to VAR8 to see of possible FW bug resetting VAR1. Manually set VAR1 to 1234 to detect reset.

11/22/2013 Low temp logger randomly being reset to current temp. Added debug email when logger reset and changed powerup reg RAM8 to VAR3 to verify if powerup flag reset. Email logger shows that VAR1 used to manage email is being reset to 0 power up flag unaffected.

8/29/2013 Added validity check to freeze warning, must be low >3 sec.

7/7/2013 Added range check to UROM values, email sent after each value change indicating in range or out of range.  
indicating out of range or in range.

7/5/2013 1) Added power up init delay for temp sensor  
2) Fixed bug if temp sensor bad at power up no email sent.  
3) Fixed logger bug does not report min temp first cycle after boot  
4) Cleaned up humidity code  
5) Replaced failed water drum temp sensor - T3

7/2/2013 Reinstalled controller  
1) Using OP7 for humidity fan  
2) Temp status fixed now testing all temp sensors  
3) Changed logic state of freeze reset push button

7/1/2013 Modified hardware  
1) Replaced freeze warning PB LS04 with 7407 to reuse inverter.  
2) Added OP7 DC humidity fan control circuitry  
3) Added freeze warning output to wood stove controller  
4) Added TVS to 9v input

6/29/2013 WebControl PCB returned with updated firmware, 3.2.17d.

6/17/2013 Replaced light SSR with EMR to resolve problem with SSR snubber causing CFLs to occasionally flash. Added gasket to both ceiling CFLs to prevent water ingress.

3/21/2013 CAI Networks confirmed temp status bug. I submitted another bug report developing wood heat controller. Same bug they thought they fixed before. Confirmed temp status bits working in FW version 3.2.17b.

1/5/2013 Email does not report min/max temperature correctly, always reports current value. Unclear when email is sent relative to

user code request. Modified routine so temp reset to current value is delayed Approx. 5 seconds after requesting email. Looks like it takes about 1.5 seconds to send email. Assume system code logs into SMTP server before creating email text body.

Added Hi temp logging in addition to low temp.

Changed bad sensor debounce to minimize spurious email.

1/4/2013      Added low temperature logging to morning and evening email. Lowest temp since last email reported in VAR5. Moved

12/5/2012      Added humidity control exhaust fan. Small DC 100 cfm muffin fan exhausting through high quality dryer vent. Temporarily used switched AC outlet channel. Need to update hardware in summer with FET controlled DC Fan power to free up outlets for other use.

10/30/2012      Installed

9/26/2012      Temp status does not report Temp sensors 7/8 correctly. Submitted bug report to CAI Networks, stated 3.2.11 FW is a year old and that bug is fixed in ver 3.2.12, current FW is 3.2.15. Cost \$15 to upgrade. Choose not to upgrade at this time.

6/25/2012      Code start

2/7/2012      Project start

\*\*\*\*\* PCB Hardware/Firmware version \*\*\*\*\*

Hardware: 2.2.2

Firmware: 3.2.17d

Customer loop executed every ~50ms (minimal test code) 65ms-ish (real code)

VAR and RAM initialized to 0 by system at power up

To reset PLC to power up state - update network settings (Send)

RAM location reset to 0 on code upload, VAR not affected

WebControl takes about 400ms to init I/O at power up

Per CAI Support Temp sensors take up to 2 sec to stabilize at power up

Email takes about 1.5 sec to send, no timeout if SMTP server does not respond

TTL inputs have 10k pulldown

Output buffers 10mA per output, 30mA total

A/D 10V full scale 10-bits

9V power consumption:

WebControl only 175ma (Live Ethernet serving web page)

WebControl + interface 220-250ma

Humidity fan: 500ma

\*\*\*\*\* I/O Defs \*\*\*\*\*

#### Analog Inputs

-----

AIP1 - not used

AIP2 - not used

AIP3 - not used

#### Digital Inputs

-----

IP1 - Light\_on

IP2 - Light\_off

IP3 - Ent\_Dr\_closed

IP4 - Bsmt\_fan\_dr\_closed

IP5 - Spare\_input

IP6 - /Freeze\_pushbutton

IP7 - not used

IP8 - not used

#### Digital Outputs

-----

OP1 - Rock\_fan

OP2 - Ceiling\_fan

OP3 - Outlets

OP4 - Basement\_fan

OP5 - Light

OP6 - Freeze\_warning

OP7 - Humidity\_fan

OP8 - not used

#### Temperature Sensors

-----

T1 - Outside\_air (house Northeast corner)

T2 - Inside\_air (GH southwest corner)

T3 - Water\_drum (north wall east of door)

T4 - not used

T5 - Well pressure tank

T6 - GH solar batch heater (east tank)

T7 - Wood stove water storage

T8 - Electric water heater

#### Temp Sensor status (1 = OK)

-----

TS1

TS2

TS3

TS4

TS5  
TS6  
TS7  
TS8

Humidity Sensor (GH southwest corner)

-----

H1

Email message Identifiers

-----

EM1 - Freeze Warning  
EM2 - Bsmt fan door closed  
EM3 - Sensor failure  
EM4 - UROM out of normal range  
EM5 - UROM in normal range  
EM6 - Debug  
EM7 - Morning daily status email (6AM)  
EM8 - Evening daily status email (6PM)

Variables

-----

VAR1 - Basement fan runtime in seconds since last status email  
VAR2 - Sum current UROM values. If match no email sent.  
VAR3 - Powerup init flag  
VAR4 - High Temp since last status email  
VAR5 - Low Temp since last status email  
VAR6 - Status email next time flag 6AM and 6PM  
VAR7 - Bad Sensor state: 0=send email, 1-100 debounce counter, 101=email sent  
VAR8 -

RAM

---

RAM1 - Scratch: Temp status, fan hysteresis  
RAM2 - Basement fan door email once per occurrence, 1=email sent  
RAM3 - Next second flag for basement fan runtime counter.  
RAM4 -  
RAM5 -  
RAM6 -  
RAM7 -  
RAM8 - Email delay state: 0=set min/max temp to current, 1-1000=temp reset delay,  
1001 email sent

Web constants

-----

UROM1 - Ceiling fan on, inside temp >75-95F (currently 85F)  
UROM2 - Rock fan on, outside temp <35-60F (currently 42F)  
UROM3 - Basement fan on, inside temp <35-60F (currently 44F)  
UROM4 - Humidity fan on, inside RH >60-90% (currently 75%)

\*\*\*\*\*

#### GHINIT

Runs once at power up. Delay for temp sensors to stabilize and sets VAR3 flag

#### RANGECHK

Tracks UROM values. Whenever value changes upper and lower bound for each is tested and "in bound" or "out of bound" email sent. Runs at powerup and each time UROMx value changed. Values are checked but FW does not override user entered value.

NOTE: if one value is decreased by same amount another increased, sum does not change so email is not sent.

#### LIGHT

Ceiling light control, latches last state of door pushbuttons

#### CEILING

Ceiling exhaust fan, on if inside air temp >UROM1

#### ROCK

Rock storage blower on when outside air temp <UROM2. Overridden if basement fan on. No reason to attempt to store heat in rock floor if we are blowing air in from the basement.

#### BSMT

Basement fan blows air in from basement if inside air temp is <UROM3. If fan door is closed, LED blinks and email warning sent. VAR1 incremented each second basement fan runs providing a cumulative total of run time. Count is reset at morning and evening email. Accurate to +/- 1 second.

Pulses freeze bit for 200ms to wake up wood stove control each time fan is started. This insures fresh air fan, connected to wood stove controller, is running to prevent depressurization when basement air is pumped into greenhouse.

If fan is running at 0 and 30 minutes past the hour pulses freeze again to make sure wood stove controller idle timer does not turn controller off.

#### FREEZE

If inside temp drops dangerously low, email sent and wood stove controller activated to sound audible alert. Push button used to reset alarm. When freeze is reset delay is invoked to cause LED to flash off momentarily if reset while inside temp still too low.

#### HUMIDITY

If outside temp low enough and inside temp not too low and % humidity exceeds UROM4 set point small exhaust fan on.

#### SENSOR

Monitors health status of 1-wire temp sensors, If sensor status bad for 100 passes through user code (VAR7) email sent. Reset if status returns to good.

#### EMSTATUS

Min/max temperature logged and basement fan run time. Status email sent 6AM and 6PM every day.

\*\*\*\*\* Code \*\*\*\*\*

#### START

TSTNE	VAR3 1
CALLSUB	GHINIT
CALLSUB	RANGECHK
CALLSUB	LIGHT
CALLSUB	CEILING
TSTEQ	OP4 0
CALLSUB	ROCK
CALLSUB	BSMT
CALLSUB	FREEZE
CALLSUB	HUMFAN
CALLSUB	SENSOR
CALLSUB	EMSTATUS

#### END

#### GHINIT:

SET	VAR3 1
SET	VAR7 100
DELAY	3000
RET	

#### RANGECHK:

ADD	UROM1 UROM2 RAM1
ADD	UROM3 RAM1 RAM1
ADD	UROM4 RAM1 RAM1
TSTEQ	VAR2 RAM1
RET	

SET	VAR2 RAM1
TSTLT	UROM1 75
GOTO	BADUROM
TSTGT	UROM1 95
GOTO	BADUROM
TSTLT	UROM2 35
GOTO	BADUROM
TSTGT	UROM2 60
GOTO	BADUROM
TSTLT	UROM3 35

GOTO	BADUROM
TSTGT	UROM3 60
GOTO	BADUROM
TSTLT	UROM4 60
GOTO	BADUROM
TSTGT	UROM4 90
GOTO	BADUROM
EMAIL	EM5
RET	
BADUROM:	
EMAIL	EM4
RET	
LIGHT:	
TSTEQ	IP1 1
SET	OP5 1
TSTEQ	IP2 1
SET	OP5 0
RET	
CEILING:	
MUL	UROM1 10 RAM1
TSTGE	T2 RAM1
SET	OP2 1
SUB	RAM1 20 RAM1
TSTLE	T2 RAM1
SET	OP2 0
RET	
ROCK:	
MUL	UROM2 10 RAM1
TSTLE	T1 RAM1
SET	OP1 1
ADD	RAM1 20 RAM1
TSTGE	T1 RAM1
SET	OP1 0
RET	
BSMT:	
MUL	UROM3 10 RAM1
TSTLE	T2 RAM1
CALLSUB	REALCOLD
TSTEQ	OP4 1
CALLSUB	ADDSECOND
ADD	UROM3 1 RAM1
MUL	RAM1 10 RAM1
TSTLT	T2 RAM1

RET	
SET	OP4 0
SET	RAM2 0
RET	
REALCOLD:	
TSTEQ	IP4 1 OP1
NOP	
TSTEQ	IP4 0
CALLSUB	FRZWINK
TSTEQ	OP4 0
ADD	CS 1 RAM3
TSTEQ	IP4 0 OP4
RET	
TSTEQ	RAM2 0
EMAIL	EM2
SET	RAM2 1
RET	
ADDSECOND:	
CALLSUB	FRZWINK
TSTNE	CS RAM3
RET	
INC	VAR1
INC	RAM3
TSTGE	RAM3 60
SET	RAM3 0
RET	
FRZWINK:	
TSTEQ	OP6 1
RET	
TSTEQ	OP4 0
GOTO	FRZWINK2
TSTEQ	CM 0
GOTO	FRZWINK1
TSTNE	CM 30
RET	
FRZWINK1:	
TSTNE	CS 0
RET	
DELAY	800
FRZWINK2:	

SET	OP6 1
DELAY	200
SET	OP6 0
RET	
FREEZE:	
TSTLE	T2 360
CALLSUB	NEWFREEZE
TSTEQ	IP6 0
SET	OP6 0
RET	
NEWFREEZE:	
TSTEQ	OP6 1
RET	
DELAY	3000
TSTGT	T2 360
RET	
SET	OP6 1
EMAIL	EM1
RET	
HUMFAN:	
TSTGE	T1 700
GOTO	HUMOFF
TSTEQ	OP2 1
GOTO	HUMOFF
ADD	UROM3 5 RAM1
MUL	RAM1 10 RAM1
TSTLE	T2 RAM1
GOTO	HUMOFF
SUB	UROM4 2 RAM1
TSTLE	H1 RAM1
GOTO	HUMOFF
TSTGE	H1 UROM4
SET	OP7 1
RET	
HUMOFF:	
SET	OP7 0
RET	
SENSOR:	
AND	TS1 TS2 RAM1
AND	TS3 RAM1 RAM1
AND	TS5 RAM1 RAM1

AND	TS6 RAM1 RAM1
AND	TS7 RAM1 RAM1
AND	TS8 RAM1 RAM1
BZ	BADSENSOR
SET	VAR7 100
RET	
BADSENSOR:	
TSTEQ	VAR7 101
RET	
DEC	VAR7
TSTNE	VAR7 0
RET	
EMAIL	EM3
SET	VAR7 101
RET	
EMSTATUS:	
TSTEQ	RAM8 0
GOTO	NEWMINMAX
TSTEQ	RAM8 1001
GOTO	LOGGER
DEC	RAM8
RET	
NEWMINMAX:	
SET	RAM8 1001
SET	VAR4 T2
SET	VAR5 T2
SET	VAR1 0
RET	
LOGGER:	
TSTGT	T2 VAR4
SET	VAR4 T2
TSTLT	T2 VAR5
SET	VAR5 T2
TSTEQ	CH 6
GOTO	MORNMAIL
TSTEQ	CH 18
GOTO	EVENMAIL
RET	
MORNMAIL:	
TSTEQ	VAR6 18
RET	

EMAIL	EM7
SET	VAR6 18
SET	RAM8 1000
RET	

EVENMAIL:

TSTEQ	VAR6 6
RET	

EMAIL	EM8
SET	VAR6 6
SET	RAM8 1000
RET	

\*\*\*\*\* End \*\*\*\*\*